

I FEEL  
SLOVENIA

SLOVENIA  
*Outdoor*  
BIKING

CYCLING ACCOMMODATION

# MY WAY OF CYCLING TO A PERFECT REST.

---

#sloveniaoutdoor  
#ifeelsLOVEnia  
#myway

[www.slovenia-outdoor.com](http://www.slovenia-outdoor.com)  
[www.slovenia.info](http://www.slovenia.info)

# NOW IS THE TIME. TO CYCLE THROUGH THE HEART OF EUROPE.

Everything is close in the only European country combining the Alps, the Mediterranean, the Karst, and the Pannonian Plain. It is only about a two-hour drive from the capital of Slovenia to even the most remote corners of the country. Everywhere in this country, long known as a sustainable destination for unique boutique experiences, you can find themed and long-distance cycling trails that will bring you closer to the charms of this beautiful land.

**Alpine Slovenia** enables activities among the highest peaks and the wildest rivers. Discover how natural features shaped the culture and life in the towns in the foothills of Alpine mountains and the domed Pohorje Hills. **Mediterranean & Karst Slovenia** surprises with its world-famous landmarks, such as the northernmost salt pans on the Adriatic Sea and the most visited Karst cave in Europe. **Thermal Pannonian Slovenia** offers an abundance of wellbeing in natural health resorts with thermal and

mineral waters whose health benefits are proven. You can find many castles and vine-growing hills in this region. **Ljubljana & Central Slovenia** move to the rhythm of the capital on the one hand, while on the other they offer the experiences of green countryside and UNESCO heritage, which even safeguards globally significant primeval forests, not far from the capital.

Slovenia is an excellent choice for cycling adventures all 365 days of the year. **Tour and gravity mountain bikers** and lovers of **bike parks** live it up from spring to autumn. **Road cycling** and **family cycling trips** are available throughout the year, depending on weather conditions. **Road and mountain long-distance trails** of various levels of difficulty are especially appealing among the numerous options. **Specialised accommodation facilities for cyclists** are a particular advantage of Slovenia. There are already more than fifty to choose from.



## GREEN&SAFE.

Slovenia was one of the first countries in the world to obtain the Safe Travels label of the World Travel and Tourism Council (WTTC). Slovenian tourist providers observe the GREEN & SAFE responsible travel standards, including all hygiene measures stipulated by the National Institute of Public Health. Please respect them, too. Observe the recommendations at your selected destination and stay safe and healthy.

## SHARE PLEASANT MEMORIES.

Showcase the newly discovered sights of Slovenia. Let's reward good experiences by sharing recommendations on social networks and among friends. Let's maintain and boost the visibility of green, active and healthy Slovenia all over the world.

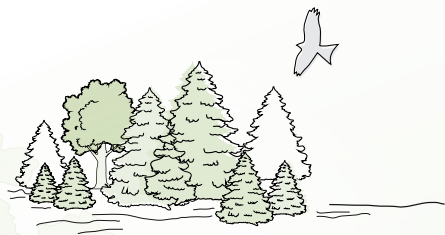
#ifeelsLOVEnia  
#myway



# EXPLORE THE GREEN COUNTRY IN A SUSTAINABLE WAY.

SLOVENIA  
GREEN 

Slovenia is known far and wide as a country of sustainable tourism. At their every step, guests can rely on green choices, certified within the framework of the innovative and internationally renowned Green Scheme of Slovenian Tourism. Destinations marked with the Slovenia Green label offer an abundance of opportunities for outdoor activities. Accommodation facilities, tourist agencies, parks, sights and, soon, gastronomic points displaying the green label are the choice for all who care about the environment and the future.



## RESPECT NATURE DURING OUTDOOR ACTIVITIES.

In Slovenia, one of the most biodiverse countries in the world, people quickly find themselves in the habitat of rare animal and plant species when spending their leisure time actively. Almost 40 per cent of Slovenia's territory is designated as nature protection areas. A fifth of the Slovenian coast is a protected area. Respect nature. Stay on marked trails. Take nothing from nature and do not leave anything behind you.

## WHILE TRAVELLING AROUND SLOVENIA

### ENJOY THE CLEAN DRINKING WATER.

Slovenia is a land rich in various types of water, particularly clean drinking water. It is one of the first countries in the world whose Constitution provides the right to clean drinking water. Many towns have drinking fountains. When going on an outdoor activity, pour water in a reusable, environmentally friendly bottle.

## CHOOSE ECO-FRIENDLY

### TRANSPORT.

When planning to explore Slovenia using your own or a rented bike, plan environmentally friendly transport between towns and destinations as well. Explore public transport options.



## TASTE TYPICAL LOCAL

### DISHES AND BEVERAGES.

When wandering around Slovenia, it's easy to find delicious and healthy food that replenishes your energy. Slovenia is the **European Region of Gastronomy 2021**. Enjoy tasty meals at Slovenian inns, tourist farms or mountain huts. When stopping to eat, you will also encounter world-class gastronomy. Taste what the chefs awarded Michelin stars and Gault & Millau's toques are creating.

## EXPERIENCE MORE AND IN A DIFFERENT WAY.



The most local, genuine, experiential, boutique and also sustainability-oriented Slovenian tourist experiences are embellished with the **Slovenia Unique Experience** label. Many of them feature outdoor activities. Enrich your cycling experiences with new adventures.



- population of **2,094 million**
- **20.273 km<sup>2</sup>** surface area
- **10.000 km<sup>2</sup>** forest surface area, making Slovenia the 3rd most forested country in Europe
- **46,6 km** of coastline

- **2864 m** the highest peak, Mt. Triglav
- 2004 accession to the **European Union**
- 2007 member of the **Schengen area**

- **Central European time zone** GMT + 1
- currency **euro €**
- **Slovenian** the official language (also Hungarian and Italian in ethnically mixed territories)

# LONG-DISTANCE CYCLING TRAILS



## SLOVENIAN MOUNTAIN BIKE ROUTE

The trail on a map	
Length	1800 km
Number of stages	41
Information	<a href="http://www.stkp.pzs.si">www.stkp.pzs.si</a> <a href="http://www.slovenia-outdoor.com">www.slovenia-outdoor.com</a>

## TRANS KARAVANKE

The trail on a map	
Length	132 km
Number of stages	5
Information	<a href="http://www.mtbpark.com">www.mtbpark.com</a> <a href="http://www.karavanke.eu">www.karavanke.eu</a>



## DRAVA CYCLING TRAIL

The trail on a map	
Length	710 km; across Slovenia 145 km
Number of stages	4 in Slovenia
Information	<a href="http://www.dravabike.si">www.dravabike.si</a>

## POHORJE CYCLING TRANSVERSAL

The trail on a map	
Length	75 km
Information	<a href="http://www.visitmaribor.si">www.visitmaribor.si</a> <a href="http://www.slovenia-outdoor.com">www.slovenia-outdoor.com</a>

## ALPINE MARATHON ROUTE

Length	130 km
Number of stages	1
Information	<a href="http://www.kamnik-savinja-alps.com">www.kamnik-savinja-alps.com</a>

## VIA BELA KRAJINA

The trail on a map	
Length	115 km
Number of stages	2
Information	<a href="http://www.slovenia-outdoor.com">www.slovenia-outdoor.com</a>

## PARENZANA – EUROVELO 8

The trail on a map	
Length	123 km
Information	<a href="http://www.parenzana.net">www.parenzana.net</a> <a href="http://www.slovenia-outdoor.com">www.slovenia-outdoor.com</a>

## D2 – EUROVELO SAVA

The trail on a map	
Information	<a href="http://www.slovenia-outdoor.com">www.slovenia-outdoor.com</a>

## EUROVELO 9, 13

The trail on a map	
Information	<a href="http://www.eurovelo.com/slovenia">www.eurovelo.com/slovenia</a> <a href="http://www.slovenia-outdoor.com">www.slovenia-outdoor.com</a>

## JULIAN CIRCUIT

The trail on a map	
Length	280 km
Number of stages	8
Information	The Julian circuit ( <i>Julijski Krog</i> ) is a part of the Slovenian mountain bike route. <a href="http://www.julian-alps.com">www.julian-alps.com</a> <a href="http://www.stkp.pzs.si">www.stkp.pzs.si</a> <a href="http://www.slovenia-outdoor.com">www.slovenia-outdoor.com</a>

The routes are marked on the map on page 6.





Soča river

## SLOVENIA BIKE HOTELS AND CAMPS



Alongside the traditional star system, cyclist-friendly providers of accommodation and food (hotels, hostels, pensions, apartments and others) can acquire bicycle symbols indicating the extent and quality of what they offer to cyclists.

**Basic services are indicated with one bicycle, and then range up to five bicycles, a designation reserved for tourism providers who live with cyclists and for whom it represents their main activity.**



### ONE BIKE

The hotel provides information on what there is for cyclists in the local area, as well as a cycling info point.



### TWO BIKES

In addition to basic information about what is on offer for cyclists, the hotel has a cycling map of the area, marked local cycle routes, a cycling guide and the option of local bike rental.



### THREE BIKES

The hotel provides professional cycling advice for planning tours, with several cycling guides available, it provides GPS data for tours and guided cycling tours, and offers at least a 4-day programme of local cycling tours.



### FOUR BIKES

The hotel offers a 6-day programme of cycling tours and a number of cycling guides. It offers spare inner tubes of various dimensions for sale, free transport to service points and replacement bikes.



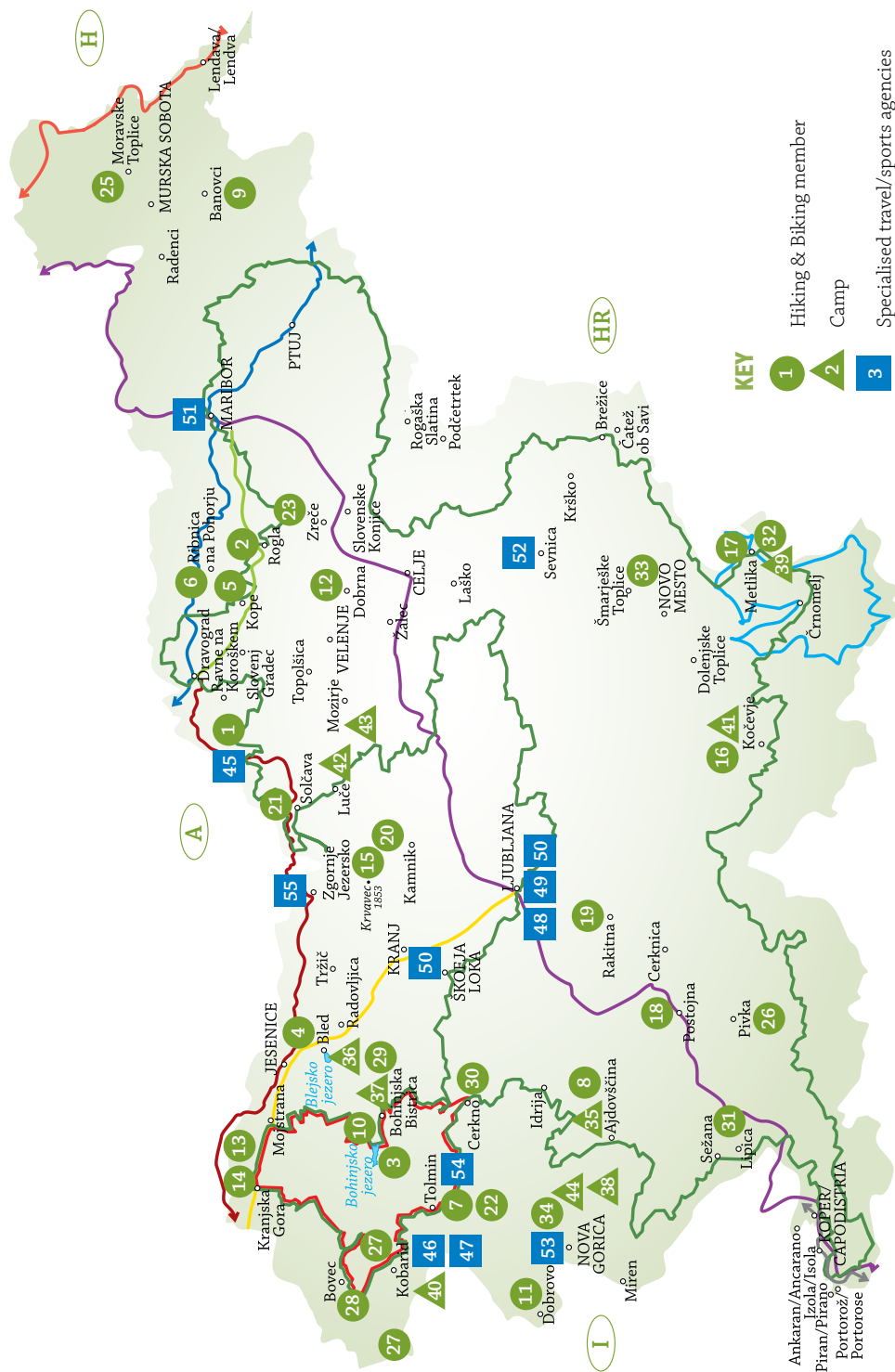
### FIVE BIKES

Premises with five bikes must meet almost all the needs of cycling tourists, and in addition to the facilities provided, these needs are met by an employed cycling guide.



### SLOVENIA BIKE CAMPS

Biker-friendly campsites provide a range of information on cycling excursions nearby and further afield, and they offer a 4-day cycling tour programme and one trained guide.



# SPECIALISED ACCOMMODATION FOR CYCLISTS, CYCLING CAMPSITES AND AGENCIES

## SPECIALISED ACCOMMODATIONS FOR BIKERS



- 1 Jamnica, BIKE BASE – EKOHOTEL KOROS
- 2 Rogla, HOTEL ROGLA



- 3 Bohinjsko jezero, HOSTEL POD VOGLOM
- 4 Bled, HOTEL RIBNO
- 5 Kope, LUKOV DOM NA KOPAH
- 6 Ribnica na Pohorju, BLACK PEAK
- 7 Tolmin, PENZION KOBALA



- 8 Ajdovščina, AJDOVŠČINA YOUTH HOSTEL
- 9 Banovci, TERME BANOVCi SPA – ZELENi GAJ HOTEL VILLAGE
- 10 Bohinjsko jezero, CHALET HIKE&BIKE
- 11 Brda, EKOHOTEL SAN MARTIN
- 12 Dobrna, HOTEL, RESTAURANT TRIGLAV
- 13 Gozd Martuljek, ŠPIK ALPINE RESORT
- 14 Kranjska Gora, HOTEL KOMPAS
- 15 Krvavec, HOTEL KRVAVEC
- 16 Kočevje, HOSTEL BEARLOG
- 17 Metlika, HOTEL BELA KRAJINA
- 18 Postojna, HOTEL CENTER
- 19 Rakitna, HOTEL RAKITNA
- 20 Snovik, TERME SNOVIK
- 21 Solčava, TURIZEM NA KMETIJI LENAR
- 22 Tolmin, HOTEL DVOREC
- 23 Zreče, HOTEL VITAL



- 24 Drežnica, GOSTIŠČE JELKIN HRAM
- 25 Moravske Toplice, HOLIDAY RESORT PANNONIAN VILLAGE
- 26 Prem, TURIZEM JENEZINOVI

- 27 Robidišče, TRAIL CENTER & ROBIDIŠČE DISPERSED HOTEL
- 28 Srpenica, HOTEL BOKA & BISTRO & OUTDOOR

## BIKE CAMPS



- 35 Ajdovščina, AVTOKAMP AJDOVŠČINA
- 36 Bled, CAMPING BLED
- 37 Bohinjska Bistrica, CAMP DANICA
- 38 Dornberg, SAKSIDA WINE & CAMPING RESORT
- 39 Gradac, HOLIDAY RESORT & CAMPING BELA KRAJINA
- 40 Kobarid, CAMP KOREN KOBARID APARTMENT VILLAGE/CAMPSITE
- 41 Kočevje, CAMP JEZERO
- 42 Luče, KAMP ŠMICA
- 43 Rečica ob Savinji, KAMP MENINA
- 44 Šempas, KAMP LJAK

## SPECIALISED AGENCIES FOR BIKERS

- 45 Jamnica, MOUNTAIN BIKE NOMAD
- 46 Kobarid, POSITIVE SPORT
- 47 Kobarid, SOČA VALLEY FREEERIDE
- 48 Ljubljana, BIKEGALAXY
- 49 Ljubljana, MONOLIT
- 50 Ljubljana, VISIT GOODPLACE
- 51 Maribor, MTBGO.SI
- 52 Sevnica, TURIZEM TONI
- 53 Solkan, SOČA FUN PARK
- 54 Tolmin, B-TOURS
- 55 Zg. Jezersko, FEEL GREEN



## JULIAN ALPS • BOHINJ

### Turizem Bohinj

Stara Fužina 38, SI-4265 Bohinjsko jezero

**t** +386 (0)4 574 75 90

**e** info@bohinj.si

**www.bohinj.si**

**easy/family** **MTB** **road bike** **e-bike** **bike park**

Bohinj lies in the heart of the Julian Alps, so cycling around Bohinj is full of wonderful views of the Triglav mountain range and the Bohinj-Tolmin peaks. Mt Triglav, which reigns over Bohinj, shows itself in the most unusual viewing points, both in the Lower

and Upper Bohinj valleys and higher-lying cycle trails. In the summer the Pokljuka area offers very pleasant rides, with its sheltering spruce forests providing a little more refreshment than the lower valley, although cycling down there you can stop and freshen up with a dip in Lake Bohinj. We also recommend exploring Bohinj and its rich cultural heritage in spring and autumn, when the cycling trails are less busy and you can immerse yourself in the idyllic Alpine landscape more deeply, while seeking out the wide-ranging secrets of Bohinj.

### 3 HOSTEL POD VOGLOM\*\*



### Pac d.o.o.

Ribčev Laz 60, SI-4265 Bohinjsko jezero

**t** +386 (0)4 572 34 61, **m** +386 (0)40 864 202

**e** info@pac.si

**www.pac.si**

**easy/family** **MTB** **road bike** **e-bike** **bike park**

### For cyclists:

- electric bike rides around the Bohinj countryside;
- cycling around the Bohinj uplands;
- electric bike rides to Goriška Brda (train + cycling);
- cycling trip to the Voje Valley;
- cycling tour of Bohinj area villages;
- ski biking on Pokljuka.

**Accommodation with breakfast:** from EUR 16 per person per night



## 10 CHALET HIKE&amp;BIKE

**Turistična agencija HIKE&BIKE**

Stara Fužina 117, SI-4265 Bohinjsko jezero

t +386 (0)31 374 660

e grega@hikeandbike.si

www.hikeandbike.si

easy/family

MTB

road bike

e-bike

bike park

**For cyclists:**

- Tour and trail, road and gravel
- Owner is a licensed cycling guide
- Tailored packages for cyclists
- One-day guided cycle tours
- Bike-hire facilities (full-suspension Specialized bikes and electric mountain bikes)
- One-stop shop: accommodation, guide, GPS tracking, bike hire, bike service facilities, shuttles

**Per-night price for the house (1–6 people):**

EUR 150–200

## 37 CAMP DANICA \*\*\*

**Camp Danica Bohinj**

Triglavská cesta 60, SI-4264 Bohinjska Bistrica

t +386 (0)4 572 17 02

e info@camp-danica.si

www.camp-danica.si

easy/family

road bike

bike park

**For cyclists:**

- cycling-friendly campsite open all year;
- campsite with ECOCAMPING and GREEN ACCOMMODATION signs;
- use of bike tools and bike storage facility, laundry facilities;
- cycling trail right by the campsite;
- guided excursions with a licensed cycling guide.

**Campsite accommodation (per person per night):**EUR 9.50–30.00. **Hut accommodation (2 persons per night):** EUR 80–100 (10% discount for cyclists)

## 29 BOHINJ ECO HOTEL \*\*\*\* SUPERIOR

**Bohinj ECO Hotel**

Triglavská cesta 17, SI-4264 Bohinjska Bistrica

t +386 (0)8 200 40 00

e info@bohinj-eco-hotel.si

www.bohinj-eco-hotel.si

easy/family

MTB

**For cyclists:**

- Hotel connected by underground passage to the Aquapark & Wellness Bohinj water park, which offers swimming pools, saunas, wellness services and a salt room
- Safe bike-storage area
- Charging station for electric bikes
- Bike hire available
- Five-lane bowling alley

**Double room with breakfast:** from EUR 64 per person per night

## 4 HOTEL RIBNO\*\*\*



### Hotel Ribno

Izletniška 44, SI-4260 Bled

t +386 (0)4 578 31 00

e info@hotel-ribno.si

www.hotel-ribno.si

easy/family

MTB

road bike

e-bike

### For cyclists:

- **Tour** / Pokljuka – Triglav National Park, Jelovica
- **Easy** / Valvasor, Veliki Javornik
- **Family** / Lake Bled and surroundings, Talež
- **3 qualified hotel-based guides** (Matija Blažič – owner, Aleš Ulčar, Tadej Valjavec – former professional cyclist who competed in the Tour de France and Giro d'Italia)
- Individual approach to each cyclist and their needs (special "cyclists' corner")

**Double room with breakfast:** EUR 45–70 per person per night

## 36 CAMPING BLEĐ\*\*\*\*\*



### Camping Bled

Kidričeva 10 c, SI-4260 Bled

t +386 (0)4 575 20 00

e info@camping-bled.com

www.camping-bled.com

easy/family

MTB

road bike

e-bike

### For cyclists:

- Modern campsite that lies on the western shore of Lake Bled, also offers glamping and is open in the winter as well
- Activities: cycling, hiking, Segway tours around Bled and its environs, rafting, canyoning, horse riding, balloon rides ...
- Option to hire GPS-equipped trekking and mountain bikes (including e-MTBs)

## 49 MONOLIT



### Monolit d.o.o.

Letališka 33d, SI-1000 Ljubljana

t +386 (0)1 546 67 60

e info@monolit.si

www.monolit2go.si

### For cyclists:

- **Monolit2go**, a mountaineering, cycling and excursion guide for planning leisure activities in Slovenia.





Kranjska Gora

## 14 HOTEL KOMPAS\*\*\*\*, KRANJSKA GORA



### Hotel Kompas

Borovška cesta 100, SI-4280 Kranjska Gora

t +386 (0)4 589 21 00

e info@hit-alpine.si

www.hit-alpine.si

easy/family

road bike

bike park

### For cyclists:

- Cycling trails close by (links to Italy and Austria), option of excursions with an activity leader/coordinator. More than 200 km of marked routes on forest roads in the Karavanke/Karawanken
- Sports massage, wellness, in-hotel activities for the whole family, free entry to the Aqua Larix water park and the Kompas Relaxation Centre

**Double room, half-board:** EUR 48–75 per person per night

## 13 ŠPIK ALPINE RESORT\*\*\*/\*



### Alpski resort Špik

Hotel Špik\*\*\* & Hotel Špik\*\*\*\*

Jezerci 21, SI-4282 Gozd Martuljek

t +386 (0)4 587 71 00

e hotel.spik@hit.si

www.hotelspik.com

easy/family

road bike

### For cyclists:

- Bike-storage facilities and basic repair tools
- Bike hire available
- Cycling routes leading from the hotel and taking you to many sites of natural beauty (Peričnik Waterfall, Vrata Valley, River Radovna, Tamar Valley) and onwards into neighbouring Italy (Tarvisio). For those with a more daring streak, we recommend a climb up the Vršič mountain pass.

**Double room, half-board:** EUR 42–58 per person per night (3\*), EUR 54–75 per person per night (4\*)



## JULIAN ALPS • SOČA VALLEY

### **Turistično informacijski center Bovec**

Trg golobarskih žrtev 22, SI-5230 Bovec

t +386 (0)5 302 96 47

e [info.bovec@dolina-soce.si](mailto:info.bovec@dolina-soce.si)

### **Turistično informacijski center Kobarid**

Trg svobode 16, SI-5222 Kobarid

t +386 (0)5 380 04 90

e [info.kobarid@dolina-soce.si](mailto:info.kobarid@dolina-soce.si)

### **Turistično informacijski center Tolmin**

Petra Skalarja 4, SI-5220 Tolmin

t +386 (0)5 380 04 80

e [info.tolmin@dolina-soce.si](mailto:info.tolmin@dolina-soce.si)

### **Turistično informacijski center Kanal**

Pionirska 2, SI-5213 Kanal

t +386 (0)5 398 12 13

e [tic.kanal@siol.net](mailto:tic.kanal@siol.net)

[www.soca-valley.com](http://www.soca-valley.com)

Get away and switch off in the magical surroundings of the Julian Alps, Triglav National Park and the **emerald-green River Soča**.

You'll be amazed by the activities you can get up to in the Soča Valley, which has become one of the most popular outdoor destinations in Europe.

Combine cycling with discovering and learning about the rich **cultural and natural heritage** of these areas, while the local **remnants of the First World War** offer a real insight into the **rich history** of the valley and its surroundings.

We invite you to visit the **source of the River Soča**, the **Kozjak** and **Boka waterfalls**, the **Tolmin** and **Soča gorges**, **Kobarid Museum** and the **Memorial Church of the Holy Spirit at Javorca**.

easy/family

MTB

road bike

e-bike



## 28 HOTEL BOKA &amp; BISTRO &amp; OUTDOOR\*\*\*

**Hotel Boka & Bistro & Outdoor**

Žaga 156a, SI-5224 Srpenica, Bovec

t +386 (0)5 384 55 52

e info@hotel-boka.si

www.hotel-boka.si

easy/family

MTB

road bike

**For cyclists:**

- hotel situated in the immediate vicinity of the River Soča and the Boka Waterfall and just 4 km from Bovec;
- hearty breakfast, local ingredients, dinner available;
- numerous hiking and cycling trails (Juliana Trail, Alpe Adria Trail, Soča Trail) in the surrounding area;
- at Boka Outdoor you can arrange for gentle guided bicycle (including e-bike) and hiking tours, bike rental or water sports.

**Double room with breakfast:** from EUR 50 per person per night

40 ECO APARTMENT VILLAGE  
KAMP KOREN KOBARID\*\*\*\***Eko apartmajsko naselje Kamp Koren Kobarid**

Ladra 1B, SI-5222 Kobarid

t +386 (0)5 389 13 11, m +386 (0)41 371 229

e info@kamp-koren.si

www.kamp-koren.si

easy/family

MTB

road bike

e-bike

**For cyclists:**

- Mountain and/or electric bike hire
- Guided tours, shuttles
- Sauna, gym and salt room
- Camp shop and half-board arrangements
- Accommodation in eco-cabins/glamping/camping

**Half-board (per person per night):**

EUR 28–32 (camping), EUR 49–118 (cabin)

## 24 GOSTIŠČE JELKIN HRAM\*\*\*

**Gostišče Jelkin Hram**

Drežnica 30, SI-5222 Kobarid

t +386 (0)5 384 86 10, m +386 (0)41 953 370

e jelkin.hram@siol.net

www.jelkin-hram.com

MTB

**For cyclists:**

- The village of Drežnica is an excellent starting point for hikers and mountain bikers, with the Alpe Adria Trail, MTB Trans Slovenia and numerous other trails situated close to the inn.
- We offer: rooms, B&B, half-board, a garage, bike shuttle, laundry facilities, map hire, bike or guide hire.
- Discover the Soča Valley!

**Double room, half-board:** from EUR 40 per person per night

## 46 POSITIVE SPORT



### Positive Sport

Trg svobode 15, SI-5222 Kobarid

t +386 (0)40 654 475

e info@positive-sport.com

www.positive-sport.com

MTB e-bike

### For cyclists:

- Guided excursions
- Bike hire
- Shop and bike servicing

## 47 SOČA VALLEY FREERIDE



### Soča Valley Freeride

Magozd 6, SI-5222 Kobarid

t +386 (0)41 759 307

e soca.valley.freeride@gmail.com

www.soca-valley-freeride.com

www.pri-jakobu.si

MTB

### For cyclists:

- All-day MTB shuttle
- Guided MTB excursions (Enduro)
- Best singletracks in the Soča Valley
- Bike hire
- Canyoning, rafting and hiking
- Accommodation at Pri Jakobu Apartments

## 27 TRAIL CENTRE & ROBIDIŠČE DISPERSED HOTEL \*\*\*



### Trail center & Razpršeni hotel Robidišče

SI-5223 Breginj (Robidišče)

#### • Accommodation:

t +386 (0)31 345 958, e robidisce@gmail.com

www.skvor-holidayhouse.com

#### • Trail center & Accommodation:

e info@arbischa.si, www.arbischa.si

MTB bike park e-bike

### For cyclists:

- the Robidišče Trails regional centre builds MTB singletracks of varying degrees of difficulty;
- shuttles, guiding, instruction, MTB holidays, workshops, bike-cleaning, tools, e-bike charging;
- numerous singletracks and starting points for epic whole-day tours (with more than 1,000 m of downhill);
- e-bike-friendly trails and wonderful side trails for those who love road biking and gravel trails;
- hot sauna, cold beer and friends.

**Half-board:** EUR 50–100 per person per night

## 22 HOTEL DVOREC\*\*\*

**Hotel Dvorec**

Mestni trg 3, SI-5220 Tolmin

t +386 (0)5 382 11 00

e info@hoteldvorec.com

www.hoteldvorec.com

easy/family

MTB

road bike

e-bike

**For cyclists:**

- Hotel Dvorec is situated in the centre of Tolmin and offers comfortable lodgings in a casual and friendly atmosphere. You can store your bike in a secure garage equipped with a water pipe and cables for e-bikes. In the morning, we'll serve you a buffet breakfast to set you up for a day of new adventures in the Soča Valley.

**Double room with breakfast:** EUR 38.25 per person per night (basic), EUR 43.50 (standard), EUR 49.75 (superior)

## 7 PENZION KOBALA\*\*\*

**Penzion Kobala**

Poljubinj 6a, SI-5220 Tolmin

t +386 (0)5 381 01 55

e penzion.kobala@siol.net

www.penzion-kobala.si

MTB

road bike

e-bike

**For cyclists:**

- Penzion KOBALA in Poljubinj and Astra Montana Eco House are outstanding jumping off points for mountain biking, hiking and a range of other sports offered by the Soča Valley. A warm welcome awaits in the embrace of nature, while we will make every effort to provide you with an unforgettable holiday.

**Double room with breakfast:** from EUR 44 per person per night

## 54 B-TOURS

**B-TOURS Turizem in prevozi d.o.o.**

Poljubinj 4, SI-5220 Tolmin

t +386 (0)51 226 823

e info@btours.si

www.btours.si

**For cyclists:**

- transport from airports to destinations around Slovenia;
- shuttle from the Most na Soči railway station to destinations in the Soča area;
- transport in the Soča area and Goriška Brda;
- Javorca transport;
- transport of baggage from accommodation to accommodation;
- transport throughout Slovenia;
- minibus transport (20 seats);
- minivan transport (8 seats).

## 53 SOČA FUN PARK



### ProAktiv Sport d.o.o.

Pot na Breg 11, SI-5250 Solkan

t +386 (0)40 377 477

e info@socafunpark.si

www.socafunpark.si

easy/family

### Facilities:

- located right by the Solkan–Plave cycle route, the Fun Park offers four courses of varying difficulty with 47 separate obstacles in the pleasant shade of the treetops above the emerald surface of the Soča. The first part of the park is perfect for children aged between 5 and 10, while the main section, at heights of between 3 and 11 metres, is intended for older children, teens and adults;
- those who dare can return to base via a 300-metre zipline suspended about 40 metres above the Soča.

## 50 VISIT GOODPLACE



### Visit Goodplace

Rimska cesta 2b, SI-1000 Ljubljana

t +386 (0)31 370 107

e info@visit-goodplace.com

www.visit-goodplace.com

www.trans-slovenia.eu

easy/family

MTB

e-bike

### For cyclists:

- Trans Slovenia;
- cycle touring around Slovenia;
- Trans Croatia;
- best singletracks in Slovenia;
- guided and self-guided tours.

## SLOVENIAN CABLEWAY OPERATORS ASSOCIATION



### Združenje slovenskih žičničarjev – GIZ

Dimičeva 13, SI-1000 Ljubljana

t +386 (0)1 589 81 30

e info@slo-skiing.net

www.slovenia-outdoor.com

MTB

road bike

e-bike

bike park

### For cyclists:

- Slovenia's mountain skiing centres and their infrastructure are very actively involved as facilitators of various kinds of cycling. The greatest interest is shown in the service of transporting people and bicycles on cableways. For adrenalin enthusiasts this offers an easy and quick way up major altitude differences. Thrilling descents, bike parks and cycling through unspoilt nature at high altitude are their great passion.





## BRDA

### TIC Brda

Šmartno 13, SI-5211 Kojško

t +386 (0)5 395 95 95

e tic@brda.si

www.brda.si

easy/family

MTB

road bike

e-bike

The slopes of Brda, scattered above the emerald River Soča, just beg to be explored by bike – on any day of the year. The winding roads will take you through numerous little villages and, along the way, you will encounter a variety of fine local food and top-quality products.

### For cyclists:

- Hilly, diverse, green and, above all, free of heavy traffic, this region offers more than 280 km of cycling pleasure on nine routes. The trails, named after local Brda fruit, run over hilly terrain between numerous panoramic viewing points. The roads are best suited to road bikes.
- Sabotin, a peak with an incredible view, is a favourite spot for mountain bikers. There are five marked cycling routes for a special experience that follows the tempestuous events of World War I.
- Bicycle and e-bike hire

## 11 EKOHOTEL SAN MARTIN\*\*\*



### ekoHotel San Martin

Šmartno 11, SI-5211 Kojško

t +386 (0)5 330 56 60, m +386 (0)51 335 660

e info@sanmartin.si

www.sanmartin.si

easy/family

MTB

road bike

e-bike

### For cyclists:

- more than just a hotel, this is your second home in the heart of Goriška Brda, where sport comes with premium food and wine;
- we offer a full range of services to take care of you, your bike and your biking equipment;
- the cycling season never ends in Brda;
- the varied terrain is suitable for beginners, families and experienced cyclists – as well as adrenalin junkies;
- option of renting electric mountain bikes.

**Double room, half-board:** EUR 50/70–60/80 per person per night



Velika planina

## KAMNIK-SAVINJA ALPS

e [info@kamnik-savinja-alps.com](mailto:info@kamnik-savinja-alps.com)  
[www.kamnik-savinja-alps.com](http://www.kamnik-savinja-alps.com)

**MTB** **road bike** **e-bike** **bike park**

With their varied terrain, the Kamnik-Savinja Alps offer opportunities for a range of activities, the most popular being hiking and cycling. These mountain areas also offer many well-maintained trails along glacial valleys peppered with springs, waterfalls and other sites of natural interest.

The Alpine world is full of the sublime views that only the highest peaks can offer. The picturesque Maratona Alpe trail, which takes you on an entire circuit of the Alps, is definitely the cyclist's favourite. Mountain bikers particularly love the cart tracks and gorgeous scenery of the high mountains.

### 15 HOTEL KRVAVEC\*\*\*



#### Hotel Krvavec

Ambrož pod Krvavcem 50  
 SI-4207 Cerklje na Gorenjskem  
 t +386 (0)51 350 830  
 e [booking@rtc-krvavec.si](mailto:booking@rtc-krvavec.si)  
[www.rtc-krvavec.si](http://www.rtc-krvavec.si)

**MTB** **bike park**

#### For cyclists:

- biggest bike park in Slovenia with 30 kilometres of marked trails and descents;
- biggest elevation difference in descents of any bike park in Slovenia;
- suitable for experienced cyclists and beginners alike;
- Krvavec Bike Park also included in the GravityCard scheme, which brings together 21 of Europe's top bike parks.

**Double room, half-board:** from EUR 45 per person per night

## 21 TOURISM ON THE LENAR FARM



### Turizem na kmetiji Lenar

Logarska dolina 11, SI-3335 Solčava

t +386 (0)3 838 90 06, m +386 (0)41 851 829

e tk.lenar@siol.net

www.lenar.si

easy/family MTB

#### For cyclists:

- the farm is situated in the very centre of the Logar Valley Nature Park;
- guide service and equipment rental;
- cycling through the Logarska Dolina Nature Park to the Rinka waterfall;
- cycling along the panoramic roads and trails of Solčavsko;
- bike rental, charging station for e-bikes.

**Accommodation with breakfast:** EUR 49 per person per night

**Apartment rental:** from EUR 100/day

## 42 KAMP ŠMICA



### Kamp Šmica

Luče 4, SI-3334 Luče

t +386 (0)3 584 43 30

e camp.smica@siol.net

www.camp-smica.com

MTB road bike

#### For cyclists:

- the Šmica campsite is situated on the banks of the unspoilt River Savinja, not far from the magnificent Logarska Dolina, at an altitude of a little over 500 m.
- overnight accommodation in rooms, bungalows, trailers or the campsite
- local activities on offer: rafting, kayaking, tennis, mountain hiking, tours of Snežna Jama cave, excursions to Logarska Dolina and more.

## 43 KAMP MENINA



### Kamp Menina

Varpolje 105, SI-3332 Rečica ob Savinji

t +386 (0)31 219 393

e info@campingmenina.com

www.campingmenina.com

easy/family MTB

#### For cyclists:

- superbly located campsite right by the Savinja river, with a forest and its own lake;
- family cycling and nature exploration;
- mountain-biking escapes on gravel roads, cart tracks and hidden paths;
- guided tours, including mountain bike school, tours of local sites of interest and local farm-cooked food.

**Half-board** EUR 45 per person per night,  
**camping** EUR 13.50/9 per person per night  
(adults/children)

## 20 TERME SNOVIK\*\*\*\*

**Terme Snovik**

Snovik 7, SI-1219 Laze v Tuhinju

t +386 (0)1 834 41 00

e info@terme-snovik.si

www.terme-snovik.si

easy/family

MTB

road bike

e-bike

**For cyclists:**

- Bike hire available
- Cycling excursions for beginners, families or experienced cyclists
- Črnivec Pass (for road cyclists), source of the Kamniška Bistrica
- Velika Planina and Menina Planina (for mountain bikers)
- Krvavec (downhill and cross-country routes)

**Double room, half-board:** from EUR 51 per person per night

## 55 FEEL GREEN TRAVEL

**Park Jezersko, d.o.o.**

Zg. Jezersko 57, SI-4206 Zg. Jezersko

t +386 (0)31 203 930

e info@feelgreen.si

www.feelgreentravel.com (Walking, Cycling & Winter Tours)

www.park-jezersko.si (XC Skiing & Family Park)

easy/family

road bike

**For cyclists:**

- multi-day and one-day tailored and guided cycling tours in Slovenia and the Western Balkans;
- trail and hybrid bike hire, with delivery anywhere in Slovenia;
- cyclist, bike and luggage shuttles.
- six-day tailored trail bike tour of the **Kamnik-Savinja Alps - Bled - Ljubljana** starting at EUR 690 per person

## 12 HOTEL, RESTAURANT TRIGLAV\*\*\* SUPERIOR

**Hotel, gostilna Triglav**

Dobrna 12, SI-3204 Dobrna

t +386 (0)3 780 11 30

e info@gostilna-triglav.si

www.gostilna-triglav.si

easy/family

MTB

road bike

e-bike

**For cyclists:**

- boutique hotel with fully modernised rooms;
- trips with magnificent views from Paški Kozjak;
- afternoon excursion to the Valley of the Mills;
- rental of GHOST trail and classic bikes;
- excursion to Žalec (Slovenian Ecomuseum of Hops and Brewing, Green Gold beer fountain);
- trips organised in cooperation with the Krokav Cycling Club, guides available by agreement.

**Double room, half-board:** from EUR 49.90 per person per night





Single trail Jamnica

## KOROŠKA

### RRA Koroška – Regionalna razvojna agencija za Koroško, d. o. o.

Meža 10, SI-2370 Dravograd

t +386 (0)5 90 85 190

e turizem@rra-koroska.si, [www.koroska.si](http://www.koroska.si)

easy/family

MTB

e-bike

bike park

### Why is Koroška the number one cycling destination?

The rich, varied landscape, with its thick network of forest and local roads, tracks, paths and cycle routes, offers an infinite combination of trails

among peaks and valleys, and on, around or even directly through the hills.

- More than 1,000 km of biking trails
- Singletracks for mountain bikers: Jamnica Single Trail Park with the neighbouring Petzen MTB Zone and the Kope and Poseka MTB bike parks
- Unique underground cycling through Peca mountain
- Štekna, a cycling trail along the abandoned railway line in the Mislinja Valley
- e-bike destination of Ribnica na Pohorju
- Long-distance cycling tours: Drava Cycling Trail, Trans Karavanke, Trans Slovenia 03 and 04

## UNDERGROUND ADVENTURES – BIKING & KAYAKING



### Peca Underworld – mine and museum

Glančnik 8, SI-2392 Mežica

t +386 (0)2 870 01 80

e [info@podzemljepece.com](mailto:info@podzemljepece.com)

[www.podzemljepece.com](http://www.podzemljepece.com)

### Underground biking adventures

#### beneath Peca mountain– underground biking

By the light of a helmet lamp, the guide will lead you on a unique cycling trail deep underground in abandoned mine tunnels dug into the mountain of Peca. While this tour is suitable for all, only the most experienced mountain bikers will want to tackle the ENDURO BLACKHOLE TRAIL.

### Underground kayaking

The lower sections of the pit are flooded and you can explore the little underground lake by kayak.

For more, visit: [www.underground-adventures.com](http://www.underground-adventures.com)

## 1 BIKE BASE JAMNICA – EKOHOTEL KOROŠ\*\*\*



### Ekohotel Koroš

Jamnica 10, SI-2391 Prevalje

t +386 (0)2 870 30 60

e info@bikenomad.com

www.mtbpark.com

MTB

e-bike

bike park

### For cyclists:

- First dedicated mountain bike hotel in Slovenia
- Jamnica Single Trail Park – well-maintained All Mountain and Enduro trails
- Petzen MTB Zone Bike Park, with one of the longest flow trails in Europe
- Underground cycling below Peca mountain
- More than 1,000 km of biking routes and trails in the Karavanke Geopark

**Accommodation with breakfast:** EUR 30–44 per person per night

## 45 MOUNTAIN BIKE NOMAD



### Mountain Bike Nomad

e info@bikenomad.com

www.bikenomad.com

### For cyclists:

- The best trails, the best places, the best guides! We have discovered Slovenia. The first mountain bike Agency in Slovenia – since 1995.
- Individual SELF GUIDED TOURS – Guided GROUP TOURS – CUSTOM TOURS
- **Best Singletracks of Slovenia;** with our partners we have a new flexible programme, so we can organise tours for any dates and for even just two persons

## 6 BLACK PEAK, E-BIKE DESTINATION



### RBS Turizem d.o.o.

Ribnica na Pohorju 26,

SI-2364 Ribnica na Pohorju

t +386 (0)31 684 655

e book@blackpeak-ebike.com

www.blackpeak-ebike.com

easy/family

MTB

e-bike

### For cyclists:

- first e-bike destination in Slovenia;
- more than 500 km of looping and themed trails;
- guided or independent cycling tours;
- specially tailored cycling tours;
- licensed cycling guides;
- rental of e-bikes, GPS devices and protective gear;
- servicing, cleaning and drying of cycling equipment;
- accommodation in Breza&Tisa Apartments\*\*\*\*.

**Double apartment, half-board:** from EUR 40 per person per night



## KOPE

### Bike Park Kope

Razborca 62, SI-2382 Mislinja

t +386 (0)41 246 238

e rezervacije@kope.si

www.kope.si

easy/family

MTB

e-bike

bike park

Kope, the premium gem of the Koroška region, lies 12 km outside Slovenj Gradec, in the Pohorje range, where an idyllic environment stretches out at an altitude of 1,564 m.

### Kope Bike Park:

- designed for individuals, groups and families out for recreation
- all trails are connected to the Pungart chair lift
- bicycle and gear rental in the **Nitro Rent Shop Kope**
- **E-Bike Point Kope** – rental of electric full-suspension bikes and guided thematic tours around Koroška and the western section of the Pohorje
- **Kope Mini WOOM Bike Park** – with a treadmill, various purpose-built wooden structures designed as motor exercises for children over two years old, and bike rental

## 5 LUKOV DOM NA KOPAH



### Lukov dom na Kopah

Razborca 65, SI-2382 Mislinja

t +386 (0)2 883 98 50

e rezervacije@kope.si

www.kope.si

easy/family

MTB

e-bike

bike park

### For cyclists:

- fine accommodation, superb restaurant, modern wellness centre and outstanding location with unforgettable views;
- guided cycling tours with electric mountain bikes;
- dense network of existing quiet roads and forest trails;
- Kope Bike Park, equipment rental available.

**Accommodation with breakfast:** from EUR 39 per person per night



Visoko pri Poljanah

## ŠKOFJA LOKA REGION

### Turizem Škofja Loka

Kidričeva cesta 1a, SI-4220 Škofja Loka

t +386 (0)4 517 06 00

m +386 (0)51 427 827

e info@visitskofjaloka.si

www.visitskofjaloka.si

MTB

road bike

e-bike

bike park

Nestled in the hills and valleys of Škofja Loka are several hundred kilometres of well-marked and well-maintained biking trails suitable for recreational as well as more demanding cyclists.

Mountain bike enthusiasts have well-maintained and well-marked trails at their disposal in the undulating Škofja Loka hills and in Sorško Polje, linked together into the **390-km-long Loška Cycling Trail**. The trail is divided into 13 stages: some are shorter and less demanding, while others are more suitable for cyclists with a higher level of fitness. All trails take you past cultural monuments, inns, snack stops, farm-stays and mountain lodges.

### 30 HOTEL CERKNO\*\*\*



### Hotel Cerkno d.o.o.

Sedejev trg 8, SI-5282 Cerkno

t +386 (0)5 374 34 00

e info@hotel-cerkno.si

www.hotel-cerkno.si

easy/family

MTB

road bike

bike park

### For cyclists:

- numerous themed trails leading to breathtaking views
- bike rental available
- guided tours with mountain or electric bikes
- option of hiring a local cycling guide
- holder of QUDAL 2019 gold quality medal in the 'cycling hotels' category
- guided descents in MTB Cerkno Lines: 8 single trails (easy to difficult), flow trail, humps and bends, jumps

**Accommodation with breakfast:** from EUR 28 per person per night





Bike Park Rogla

## ROGLA-POHORJE

### LTO Rogla-Zreče, GIZ

Cesta na Roglo 11j, SI-3214 Zreče

t +386 (0)3 759 04 70

e info@rogla-zrece.si

www.rogla-pohorje.si

easy/family

MTB

road bike

e-bike

Don't just stand around admiring the view: Rogla-Pohorje is a destination you can feel on your skin, like the breeze that ruffles your hair as you cycle from adventure to adventure, taking in the views across wooded hills or slopes criss-crossed by vineyards.

The Pohorje countryside and its unique natural features keep watch over hidden nooks, lanes, byways and tracks that a true cyclist would find difficult to resist. The best thing about it is that everyone can find something here that meets their wishes and abilities – and that goes for e-cyclists too. One more tip: make sure you stop at a Pohorje inn or farm-stay, as the area is a bit of a foodie's paradise. (Ask for something with the 'Tastes of Rogla' mark).

### 2 HOTEL ROGLA \*\*\* SUPERIOR



### Unitur d.o.o.

Cesta na Roglo 15, SI-3214 Zreče

t +386 (0)3 757 71 00

e rogla@unitur.eu

www.rogla.eu

easy/family

MTB

road bike

e-bike

bike park

### For cyclists:

- Hotel situated on the Zreško Pohorje
- Great MTB trails
- Bike and e-bike hire available, fitness, wellness, altitude rooms and an altitude training room
- Rogla Bike Park

**Double room, half-board:** from EUR 64 per person per night

**Unitur d.o.o.**

Cesta na Roglo 15, SI-3214 Zreče

t +386 (0)3 757 60 00

e terme@unitur.eu

www.terme-zrece.eu

easy/family

MTB

road bike

e-bike

bike park

**For cyclists:**

- Hotel situated in the Zreško Pohorje foothills
- Great road and mountain bike trails (Dravinja Valley, Zreško Pohorje)
- Bike and e-bike hire available, fitness, sports diagnostic and rehabilitation programmes, wellness
- Very close to Rogla Bike Park

**Double room, half-board:** from EUR 64 per person per night

**MARIBOR – POHORJE****Zavod za turizem Maribor – Pohorje, TIC Maribor**

Partizanska 6a, SI-2000 Maribor

t +386 (0)2 234 66 11

e tic@maribor.si, www.visitmaribor.si

Cycle off along the **route of the world's oldest vine** and discover Maribor's rich wine tradition. Head for the wine-growing slopes, Pohorje or the Drava Bike Cycle Route. Adrenalin-lovers can look forward to the wild slopes of Pohorje Bike Park.

1,000 kilometres of routes, 20 tours, all types of cycling.

easy/family

MTB

road bike

e-bike

bike park

**51 MTBGO.SI AGENCY****MTBGO.si, del Unigo d.o.o.**

Police 93, SI-9250 Gornja Radgona

t +386 (0)51 606 997

e info@mtbgo.si

www.mtbgo.si

easy/family

MTB

e-bike

bike park

**For cyclists:**

- local tours: Trans Pohorje, Štajerski Triglav, Relax tours through the vineyards;
- Pohorje ponds tour featuring lakes and streams;
- Pohorje Bike Park in combination with the nearby single tracks;
- Trans Slovenia long-distance tour;
- shuttles, guiding, instruction, MTB holidays.



Ptuj

## PTUJ

### Turistično informacijski center Ptuj

Slovenski trg 5, SI-2250 Ptuj

t +386 (0)2 779 60 11

e info@visitptuj.eu, [www.visitptuj.eu](http://www.visitptuj.eu)

easy/family

road bike

Visit Ptuj, Slovenia's oldest town, the hilly green landscapes of Slovenske Gorice and Haloze, and the wide open plains of Dravsko Polje and Ptujsko Polje. During your varied biking holiday, you can take in the diverse natural and cultural heritage of the area, and try some traditional local food with wine from one of the local vineyards.



Hop gardens near Žalec

## ŽALEC

### TIC Žalec

Šlandrov trg 25, 3310 Žalec

t +386 (0)3 710 04 34, e zkst.tic@siol.net

[www.turizem-zalec.si](http://www.turizem-zalec.si), [www.hopsnakolo.si](http://www.hopsnakolo.si)

easy/family

road bike

### Hop(s) on the bike in the Lower Savinja Valley

Well-marked cycle paths pass along local and side roads and present varying levels of difficulty. Cycling through the hop gardens is a special experience, while the more adventurous will be keen to explore the hills.

## CYCLE-FRIENDLY MOUNTAIN HUTS



### Planinska zveza Slovenije

Ob železnici 30a, p. p. 214, SI-1001 Ljubljana

t + 386 (0)1 434 56 80

e info@pzs.si

[www.pzs.si](http://www.pzs.si)

### MTB

### Mountain lodges specially arranged for cyclists:

- Planina Kuhinja, Tolmin
- Planina nad Vrhniko
- Tončkov dom na Lisci
- Planinski dom na Smrekovcu
- Erjavčeva koča na Vršiču
- Planinski dom dr. Klementa Juga in Lepena, Trenta
- Planinski dom na Uskovnici





Kočevsko

## KOČEVSKO

### TIC Kočevsko

Ljubljanska cesta 4, SI-1330 Kočevje

t +386 (0)59 931 473, m +386 (0)31 544 744

e info@kocevsko.com, [www.kocevsko.com](http://www.kocevsko.com)

easy/family

MTB

road bike

bike park

Kočevsko – This mysterious Slovenian forest is one of the best preserved natural areas in Europe. Explore 10 recommended cycle trails of varying length, or some of the countless low-traffic, shady forest trails, and visit the Kočevje MTB Trail Centre, with its 14 kilometres of trails of varying difficulty.

### 16 HOSTEL BEARLOG



#### Hostel Bearlog

Ljubljanska cesta 4, SI-1330 Kočevje

t +386 (0)5 993 14 73

m +386 (0)31 544 744

e [hostel.bearlog@kocevsko.com](mailto:hostel.bearlog@kocevsko.com)

[www.kocevsko.com](http://www.kocevsko.com)

easy/family

MTB

road bike

bike park

#### For cyclists:

- Over 475 km of map-marked forest biking trails (GPS coordinates also available)
- MTB trail centre with 8 trails of varying levels of difficulty (total length 12 km), a skill park and a pump track.
- Challenge for road cyclists: the Strma Reber Pass with a demanding gradient and wonderful views
- 3-day cycling adventure, 'On the Trail of the Bear', for anyone who loves observing wildlife in its natural habitat

**Accommodation with breakfast:** EUR 20–50 per person per night

### 41 CAMP JEZERO



#### Camp Jezero

Trdnjava 3, SI-1330 Kočevje

t +386 (0)8 382 17 62

m +386 (0)31 699 600

e [camp.jezero@kocevsko.com](mailto:camp.jezero@kocevsko.com)

[www.kocevsko.com](http://www.kocevsko.com)

easy/family

MTB

road bike

bike park

#### For cyclists:

- Camp situated by a lake near Kočevje and close to many cycling trails with varying levels of difficulty (total length 475 km)
- Kočevje MTB Trail Centre with 12 km of trails
- For the bolder road cyclist: Strma Reber Pass aka "the Kočevje Vršič"
- Bike, helmet, lock and child seat hire available, as is a bike storage facility

**Campsite accommodation (per person per night):**  
EUR 12 (campsite) – EUR 50 (hut)





River Kolpa

## BELA KRAJINA

### RIC Bela krajina (DMMO)

Trg svobode 3, SI-8340 Črnomelj

t +386 (0)7 305 65 30

e info@ric-belakrajina.si, [www.belakrajina.si](http://www.belakrajina.si)

easy/family

road bike

e-bike

Bela Krajina will surprise you with its down-to-earth style and its enchanting cultural landscape. Kick back in the unspoilt reaches of the River Kolpa, sample local gastronomic delights or take part in one of the many organised activities. The region is waiting to be explored by foot, by bike or by electric bike. Marked paths will guide you from hamlet to hamlet.

### 17 HOTEL BELA KRAJINA\*\*\*



#### Hotel Bela krajina

Cesta bratstva in enotnosti 28, SI-8330 Metlika

t +386 (0)7 305 81 23, m +386 (0)40 327 492

e info@hotel-belakrajina.si

[www.hotel-belakrajina.si](http://www.hotel-belakrajina.si)

easy/family

road bike

e-bike

#### For cyclists:

- Lovely small hotel in the old town centre
- Excellent starting point for cycling trips around Bela Krajina
- Undemanding undulating terrain among vineyards, pretty villages and the Kolpa
- e-bike Kolpa, a network of e-bike routes along the Kolpa (bike hire, charging and navigation)

**Double room, half-board:** EUR 38–49 per person per night

### 39 HOLIDAY RESORT & CAMPING BELA KRAJINA\*\*\*\*



#### Holiday Resort & Camping Bela krajina

Škrlje 11, SI-8332 Gradac

t +386 (0)7 306 95 72, m +386 (0)40 327 492

e info@camping-belakrajina.si

[www.camping-belakrajina.si](http://www.camping-belakrajina.si)

easy/family

road bike

e-bike

#### For cyclists:

- Camping and cycling along the warm Kolpa river, deep in the countryside and far from the traffic
- Cycling with children: Bela Krajina is ideal for family cycling
- Ride & Paddle Kolpa: cycle – then return by canoe
- e-bike Kolpa, a network of e-bike routes along the Kolpa (bike hire, charging and navigation)
- Guided cycle tours and family holidays

#### Campsite accommodation (per person per night):

EUR 7.50–19.50 (campsite), EUR 15–39.50 (mobile homes, glamping)

**Počitniška hiša Kovačnica sreče**

Griblje 65d, SI-8332 Gradac

**m** +386 (0)31 864 353**e** info@convivas.si**www.obkolpi.si****fb** Kovačnica sreče**easy/family****road bike****For cyclists:**

- Starting point for 12 cycle routes along the Kolpa and through the entire Bela Krajina region
- Bike hire available
- Other sports activities also available (swimming, running, hiking)
- Glorious natural surroundings and the perfect starting point for discovering the cultural, historical and culinary features of the area

**Accommodation (per person per night):**

EUR 20–30



Through the tunnel of the former narrow-gauge railway

## POSAVJE

**TIC Krško**

CKŽ 46, 8270 Krško

**t** +386 (0)7 490 22 20, **m** +386 (0)51 655 936**e** tic.krsko@cptkrsko.si, **www.visitkrsko.com****easy/family****MTB****road bike**

The varied landscape of Posavje offers excellent conditions for family, trekking or road cycling of varying levels of difficulty. Along the way, discover interesting natural and cultural sights and tuck into some Posavje delicacies: puhla flatbread, Bizeljski buckwheat cake, Kozjanski capon, Krško Polje pig).

## 52 TURIZEM TONI

**Turizem Toni**

Naselje heroja Maroka 29, SI-8290 Sevnica

**t** +386 (0)7 816 28 80, **m** +386 (0)31 643 338**e** turizem.prah@siol.net**www.avto-prah.si/aktualna-ponudba/****easy/family****MTB****For cyclists:**

- **Following the bees along the Sava and Krka rivers by bike**, a visit to Sevnica Castle, a honey breakfast, a beekeepers' picnic by the Krka, a massage for tired feet in an adapted apiary.
- **Excursions by bike into SE Slovenia**, where wine-growing slopes alternate with little valleys, with numerous castles, medieval towns and superb home cooking lining the route.



Relaxing in the heart of the Dolenjska forests.

## NOVO MESTO – DOLENJSKA

### Zavod Novo mesto

#### TIC Novo mesto

Glavni trg 11, SI-8000 Novo mesto

t +386 (0)7 393 92 63

e tic@novomesto.si

www.visitnovomesto.si

easy/family

MTB

road bike

e-bike

Amidst the low hills of Dolenjska, just an hour's drive from Ljubljana and Zagreb, barely two hours from the sea and the Alps, lies Novo Mesto, centre of the Dolenjska region.

The varied landscape here offers a wide selection of cycling routes, from which you can choose difficult or easy tracks, with more ascents or fewer, running along the idyllic River Krka, in the shelter of giant forests, through rolling vineyard slopes, past castles, through villages of the Novo Mesto countryside and other delightful parts of Dolenjska. The local roads are also great for recreational road biking, while the forest trails offer more adrenalin-intense rides. Numerous recreational marathons and cycle races are held in the region during the year, and are open to participation or watching. All the information you need can be found at TIC Novo Mesto, where you can pick up a map of the bike trails.

### 33 HOTEL ŠPORT\*\*\*\*, OTOČEC



### Hotel Šport, Otočec

Grajska cesta 2, SI-8222 Otočec

t +386 (0)8 205 03 00

e booking@terme-krka.eu

www.terme-krka.si

easy/family

MTB

road bike

#### For cyclists:

- Biking and hiking (from family paths for the little ones to mountain trails on the Gorjanci Hills, MTB hire)
- Tennis, golf, sports hall
- Thermal indoor pool, sauna
- Adventure park
- Healthy food (own organic garden)
- Themed rooms for sports enthusiasts
- Romantic walks in the surroundings of Otočec Castle

**Half-board:** from EUR 65 per person per night



Rotunda, Selo

## MORAVSKE TOPLICE

### TIC Moravske Toplice

Kranjčeva 3, SI-9226 Moravske Toplice

t +386 (0)2 538 15 20, m +386(0)40 829 870

e info@moravske-toplice.com, www.moravske-toplice.com

easy/family

road bike

e-bike

The green spa destination Moravske Toplice holds a Slovenia Green bronze sustainability badge. This is a top cycling location, offering 250 km of marked cycling routes around the varied landscape of gentle hills. Bike rental at the **Bike Centre Moravske Toplice** (Kranjčeva 12, m +386 (0)31 333 377).

## 25 HOLIDAY RESORT PANNONIAN VILLAGE\*\*\*\*/\*\*\*\*



### Panonska vas

Tešanovci 11P, SI-9226 Moravske Toplice

t +386 (0)31 758 000

e info@panonskavas.si

www.panonskavas.si

easy/family

road bike

### For cyclists:

- Excellent starting point for cycling around Pomurje
- Cycle around Goričko all the way to the Mura river, Bukovniško Lake or the town of Lendava (routes are well-maintained and marked, www.panobiketrip.si)
- Trail bike rental, bike servicing and storage available
- Terme 3000 and Terme Vivat spas nearby, offering relaxing thermal treatments after an active day in the saddle

**Accommodation with breakfast:** EUR 25–32 per person per night

## 9 TERME BANOVCI SPA – ZELENI GAJ HOTEL VILLAGE\*\*\*



### Terme Banovci – Hotelsko naselje Zeleni gaj

Banovci 1a, SI-9241 Veržej

t +386 (0)2 513 14 40

e info@terme-banovci.si

www.terme-banovci.si

easy/family

road bike

### For cyclists:

- Prlekija is heaven-sent for any cycling enthusiast, since everyone can find something to suit them. It is a land of gentle hills with climbs and descents, along with pleasant flatlands for more easeful bike excursions. You get a more genuine feeling for the Terme Banovci area by bike, and the Pomurje region offers 600 km of cycling trails.

**Double room with breakfast:** from EUR 45 per person per night





## BREZOVICA

### Občina Brezovica

Tržaška cesta 390, SI-1351 Brezovica

t +386 (0)1 360 17 70

e [info@brezovica.si](mailto:info@brezovica.si), [www.brezovica.si](http://www.brezovica.si)

easy/family

road bike

e-bike

### By bike around the Ljubljansko Barje wetland and the Rakiška plateau

Discover the rich natural and cultural heritage of the area, ranging from one of the deepest natural lakes on the margin of the wetland to the karstic domain of Rakitna. You can also conquer the circular mountain route of Pentlja, more than 80 km long.

## 19 HOTEL RAKITNA



### Hotel Rakitna

Rakitna 150, SI-1352 Preserje

t +386 (0)41 761 756

e [effekt.simenko@siol.net](mailto:effekt.simenko@siol.net)

[www.effekt.si/hotel-rakitna-slo/](http://www.effekt.si/hotel-rakitna-slo/)

easy/family

road bike

### For cyclists:

- Unspoilt nature alongside an idyllic lake 800 m above sea level
- With their special Alpine-Mediterranean air, the peaks can be actively enjoyed all year round
- Activities: swimming and beach volleyball in the summer, skating and cross-country skiing in the winter, hiking, horse riding and fishing from spring to autumn
- One- or multi-day cycling tours organised

**Double room with breakfast:** EUR 47–79 per person per night

## 48 BIKEGALAXY



### Bergmac d.o.o.

Tomačevo 30a, SI-1000 Ljubljana

t +386 (0)51 680 900

e [info@bikegalaxy.si](mailto:info@bikegalaxy.si)

[www.bikegalaxy.si](http://www.bikegalaxy.si)

MTB

road bike

e-bike

### For cyclists:

- Multi-day guided cycling tours
- Cycling workshops for adults and children

**I FEEL  
SLOVENIA**

[www.slovenia.info](http://www.slovenia.info)

# MY WAY OF SHARING MOMENTS.

---

Share your favourite moments on social media  
with #ifeelsLOVEnia.

#ifeelsLOVEnia  
#myway

**GET  
INSPIRED**

GET IT ON  
Google Play



Download on the  
App Store







## VIPAVA VALLEY

### TIC Nova Gorica

Kidričeva ulica 11, SI-5000 Nova Gorica

t +386 (0)41 460 217

e nova-gorica@vipavskadolina.si

www.vipavskadolina.si

### TIC Ajdovščina

Prešernova 9, SI-5270 Ajdovščina

t +386 (0)5 365 91 40

e ajdovscina@vipavskadolina.si

www.vipavskadolina.si

The Vipava Valley (Vipavska Dolina) has year-round trails suitable for all cyclists. Road climbs and descents, steep mountain trails and less demanding terrain offer something for everyone. The Trnovska and Banjška plateaus are a big draw with their authentic ways of life, unspoilt environment and remote trails. You can enjoy new exploits by bike among the vineyards, along forest trails, along the Vipava and Soča rivers or on the maintained cycle paths in the urban centres of Nova Gorica and Ajdovščina. On your cycle tours of the Vipava Valley don't forget to stop in at one of the local establishments to sample some tasty food and mingle with the locals, something highlighted in 2018 by Lonely Planet.

easy/family MTB e-bike road bike bike park

## 34 HOTEL SABOTIN\*\*\*



### Hotel Sabotin

Cesta IX. Korpusa 35, SI-5250 Solkan

t +386 (0)5 336 50 00

e hotel.sabotin@hit.si

www.hit.si

easy/family MTB road bike e-bike

### For cyclists:

- Hotel situated on the border with Italy, on the Trans Slovenia route and Stage 3 of the Petrol Cycling Transversal
- Family cycling along picturesque paths by the Soča river, road cycling in Brda, the Karst and the Trnovska Plateau, and along tarmac side roads to Vršič and Mangart Pass
- Mountain-biking on Trnovska Plateau

**Double room, half-board:** EUR 46–62 per person per night

## 44 KAMP LIJAK



### Kamp Lijak

Ozeljan 6a, SI-5261 Šempas

t +386 (0)5 308 85 57

m +386 (0)31 894 694, +386 (0)31 341 591

e info@camplijak.com

www.camplijak.com

easy/family

MTB

road bike

### For cyclists:

- Campsite situated in the Vipava Valley and surrounded by vineyards and fields, and open in the winter
- Bike servicing, cyclist and bike shuttles
- Guided mountain bike tours along the trails of the Isonzo Front
- Themed cycling trails: Energy Cycling (from Lijak to Sekulak), Wine Cycling (from cellar to cellar), Sea Cycling (Ozeljan–Sistiana–Italy), Wind Cycling (Vipava Valley and Karst) ...

## 38 SAKSIDA WINE & CAMPING RESORT



### Saksida Wine & Camping Resort

Zalošče 12 a, SI-5294 Dornberk

t +386 (0)5 301 78 53

m +386 (0)41 208 345

e info@vinasaksida.com

www.vinasaksida.com

easy/family

MTB

road bike

e-bike

### For cyclists:

- among the vineyards of the Vipava Valley, where sport is fused with fine food and wine;
- campsite and glamping with ECOCAMPING and GREEN ACCOMMODATION signs;
- bike rental, bike tools available for use;
- guided excursions with a licensed cycling guide.

### Accommodation (per person per night):

- EUR 10–19.25 (campsite)
- EUR 28–65 (bungalow)

## 8 AJDOVŠČINA YOUTH HOSTEL



### Mladinski center in hotel Ajdovščina

Cesta IV. Prekomorske 61 A, SI-5270 Ajdovščina

t +386 (0)5 368 93 83

e info@hostel-ajdovscina.si

www.hostel-ajdovscina.si

easy/family

MTB

road bike

bike park

### For cyclists:

- Guided tours
- Pale bike park
- Singletracks, DH track, family trail
- Bike hire
- Shuttle to the descents

**Half-board:** from EUR 19



## 35 AVTOKAMP AJDOVŠČINA



### Zavod za šport Ajdovščina

Cesta 5. maja 14, SI-5270 Ajdovščina

t +386 (0)5 364 47 24

m +386 (0)51 442 553

e [repcija@zs-ajdovscina.si](mailto:repcija@zs-ajdovscina.si)

[www.zs-ajdovscina.si/kamp/](http://www.zs-ajdovscina.si/kamp/)

easy/family

MTB

road bike

bike park

### For cyclists:

- Cyclist-friendly campsite
- Cycling trails right next to the campsite
- Guided tours, singletracks, DH track, family trail
- Pale bike park
- Bike hire, washing and servicing
- Free use of the swimming pool
- Fitness, sports massage, sports hall, wellness

### Campsite accommodation:

EUR 8 per person per night

## 18 HOTEL CENTER\*\*\*



### Hotel Center

Kolodvorska 1, SI-6230 Postojna

m +386 (0)6 863 23 45

e [info@hotel-center.eu](mailto:info@hotel-center.eu)

[www.hotel-center.eu](http://www.hotel-center.eu)

easy/family

MTB

e-bike

### For cyclists:

- Hotel Center is situated just 10 minutes walk from the world-famous Postojna Cave;
- hotel staff provide tourism information and help in organising activities such as cycling, cave trekking and observing animals in the natural environment;
- separate secured garage for bike storage;
- Notranjska MTB Park with cycle trails of all levels of difficulty.

### Double room with breakfast:

EUR 25–50 per person per night

## 26 TURIZEM JENEZINOVİ



### Turizem Jenezinovi

Ratečevo Brdo 1, SI-6255 Prem

t +386 (0)5 714 71 28

m +386 (0)31 851 399

e [info@jenezinovi-sp.si](mailto:info@jenezinovi-sp.si)

[www.jenezinovi-sp.si](http://www.jenezinovi-sp.si)

easy/family

MTB

### For cyclists:

- the tiny village in which our farm is situated is surrounded by pastures, meadows and forest, all linked up by managed trails;
- the farm is an ideal base for walks, hiking and cycling;
- guests can enjoy the boules court and there is a children's play park for younger visitors;
- excellent home made cuisine prepared in the traditional way.

**Half-board:** EUR 40 per person per night



## KARST AND BRKINI

**Major destination Lipica and Škocjan Caves**

**(The Karst) – TIC Štanjel**

Štanjel 1a, SI-6222 Štanjel

t +386 (0)5 769 00 56

e info@visitkras.info, [www.visitkras.info](http://www.visitkras.info)

easy/family

MTB

e-bike

road bike

The expansive freedom of the cycle paths invites you to ride through the Karst open land to the sea, through forests and up steep trails to beautiful hill-tops. All our routes, whether paved, gravel or natural, are wonderful because of the views and stories you

can experience. Head off for an active day full of amazing opportunities for rest stops. **The Karst treats you well. Let yourself be surprised.**

**For cyclists:**

- The Karst region and Brkini offer an ideal environment for various types of cycling.
- You have a choice of narrow paved roads suitable for classic road biking and for electric bike tours, or numerous opportunities for mountain and trail biking along cart tracks, paths and gravel roads.
- Meanwhile thrill-seekers can climb up to one of the mountain tops and enjoy the short but varied descents.

### 31 HOTEL MALOVEC\*\*\*



**Hotel Malovec**

Kraška cesta 30a, SI-6215 Divača

t +386 (0)5 763 33 33

e info@hotel-malovec.si

[www.hotel-malovec.si](http://www.hotel-malovec.si)

easy/family

road bike

**For cyclists:**

- Comfortable hotel close to the A1 motorway and close to Lipica stud farm and the Škocjan Caves.
- Restaurant offering superb Mediterranean dishes
- Bike storage in a large garage
- Starting point for bike rides and hikes and for exploring the picturesque Karst landscape and its unique features, particularly its caves.

**I FEEL  
SLOVENIA**

 **SLOVENIA**  
EUROPEAN REGION OF GASTRONOMY  
AWARDED 2021

TASTE SLOVENIA

# MY WAY OF A GASTRONOMIC ADVENTURE.

A unique blend of talented chefs, season-inspired local produce, regional traditions, top-notch wines and perfect atmosphere.

Slovenia – a European Region of Gastronomy 2021.

**#ifeelsLOVEnia**  
**#myway**  
**#tasteslovenia**

[www.slovenia.info](http://www.slovenia.info)  
[www.tasteslovenia.si](http://www.tasteslovenia.si)

# SLOVENIA Outdoor BIKING

## SLOVENIA OUTDOOR

Dimičeva 13, SI-1000 Ljubljana, Slovenia

m +386 (0)41 646 566

e [info@slovenia-outdoor.com](mailto:info@slovenia-outdoor.com)

[www.slovenia-outdoor.com](http://www.slovenia-outdoor.com)

Follow us on social media:



[hikingandbikingslovenia/facebook](https://www.facebook.com/hikingandbikingslovenia/)



[slovenia\\_outdoors](https://www.instagram.com/slovenia_outdoors)



[slovenia outdoor](https://www.youtube.com/sloveniaoutdoor)



I FEEL  
SLOVENIA

## SLOVENIAN TOURIST BOARD

Dimičeva ulica 13, SI-1000 Ljubljana, Slovenia

t +386 (0)1 589 85 50

e [info@slovenia.info](mailto:info@slovenia.info)

[www.slovenia.info](http://www.slovenia.info)

Follow us on social media:



[Feel Slovenia | www.slovenia.info/facebook](https://www.facebook.com/FeelSlovenia/)



[FeelSlovenia | www.slovenia.info/instagram](https://www.instagram.com/FeelSlovenia/)



[SloveniaInfo | www.slovenia.info/twitter](https://www.twitter.com/SloveniaInfo)



[Slovenia | www.slovenia.info/youtube](https://www.youtube.com/Slovenia)



[Feel Slovenia | www.slovenia.info/pinterest](https://www.pinterest.com/FeelSlovenia/)



[Slovenia | www.slovenia.info/tripadvisor](https://www.tripadvisor.com/Slovenia)



[Slovenia Tourism | www.slovenia.info/twitterstb](https://www.twitter.com/SloveniaTourism)



[Slovenian Tourist Board | www.slovenia.info/linkedin](https://www.linkedin.com/company/SlovenianTouristBoard)

**Published by:** SLOVENIA OUTDOOR in cooperation with SLOVENIAN TOURIST BOARD · **Editors:** Dušan Štručl, Marko Lenarčič ·

**Design and layout:** Snežana Madić Lešnik · **Texts:** individual destination-based organisations and companies ·

**Cover photo:** Tomo Jeseničnik · **Photographs:** Jošt Gantar, Tomo Jeseničnik, Uroš Švigelj, Dan Briški, Peter Žunič Fabjančič, Hannes Klausner – AdventuReal, Žiga Humar, Boštjan Tacol, Rok Breznik, Aleš Fevžer, Anže Čokl, Jan Kocjan, destination-based organisations and companies photo libraries · **Translation:** Amidas · **Printed by:** Medium · **Print run:** 8,500 · August, 2020